

BOARD OF TRUSTEES

Temple University – Of The Commonwealth System of Higher Education

PUBLIC SESSION

Tuesday, October 10, 2006 at 3:00 p.m.

Feinstone Lounge, Sullivan Hall

MINUTES

Presiding Officer:

Daniel H. Polett, Chair of the Board

PARTICIPANTS

Trustees: Joan H. Ballots, Leonard Barrack, Theodore Z. Davis, Nelson A. Diaz, Ronald R. Donatucci, Loretta C. Duckworth, Richard J. Fox, Howard Gittis, Lewis F. Gould, Jr., Ann W. Hart, Lacy H. Hunt, Lewis Katz, Susanna E. Lachs, Patrick V. Larkin, Solomon C. Luo, Joseph W. Marshall, III, Theodore A. McKee, Christopher W. McNichol, Mitchell L. Morgan, Patrick J. O'Connor, Daniel H. Polett, Milton L. Rock, Robert A. Rovner, Anthony J. Scirica, Michael J. Stack, III, Daniel J. Whelan, James S. White, Michael P. Williams

Honorary Life Trustee: Peter J. Liacouras

University Counsel: George E. Moore

Ex Officio Participants: Jane D. Evans, Raysean Hogan

Administration and Staff: Frank P. Annunziato, Clarence D. Armbrister, James C. Bausman, Jr., William T. Bergman, Carl Bittenbender, William D. Bradshaw, Theresa Burt, Janet Carruth, Martin S. Dorph, Richard M. Englert, Gloria Frager, Linda Frazer, Jessica Giordano, Deborah Hartnett, Thomas M. Healey, Thomas Kupp, Robert H. Lux, Sandra McDade, Vicki L. McGarvey, Timothy C. O'Rourke, Theresa A. Powell, Robert J. Reinstein, Vanessa Rose, Gregory S. Rost, Richard Rumer, Stuart P. Sullivan, Stephen Tustin, William Wilkinson, Gregory Zimmaro

Board of Trustees (10/10/06)

MINUTES

Page 1 of 21

(final)

The meeting was called to order by Trustee Polett, Chairman of the Board.

INVOCATION:

The invocation was given by the Honorable Ronald R. Donatucci.

Introduction of Guests:

Faculty: Bonnie R. Averbach
Paul LaFollette
Christopher Loftus
Ira G. Shapiro

Students: Brendan Bailes
Ashley Mabrey
Priya Patel
Eric Stephenson

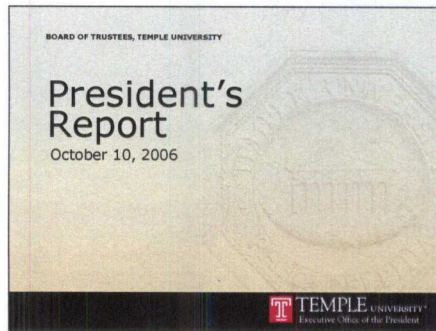
Approval of Minutes:

The minutes of the meeting of June 22, 2006, were approved as distributed.

* * * * *

PRESIDENT'S REPORT – ANN WEAVER HART

Slide 1



Good afternoon...

Slide 2



Slide 2:

STUDENTS

Fall 2006 enrollment

Total student enrollment, Fall 2006:
34,218 (not including Temple
University Japan)

Highest enrollment in 29 years, and
third-highest student enrollment in
Temple history

(only 1976 and 1977 were higher —
and 1976 was only higher by one
person)

Highest undergraduate enrollment ever:
24,197 (not including TUJ)

Largest full-time student enrollment
ever: 26,605 (not including TUJ)

Also largest full-time equivalent (FTE)
enrollment ever: 29,143 (not including
TUJ)


Slide 3

STUDENTS

Freshmen and transfers

3,996 first-year, first-time students; 2,549 transfers

- 55 percent female, 45 percent male.
- About one in three report their ethnicity as: American Indian, Asian, Black, or Hispanic.
- 39 states, 101 nations



TEMPLE UNIVERSITY
Executive Office of the President

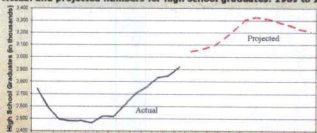
Slide 4

STUDENTS

Continued enrollment growth?

- The Baby Boom echo will plateau in 2009.
- The time has come to focus on services.

Actual and projected numbers for high school graduates: 1989 to 2014



TEMPLE UNIVERSITY
Executive Office of the President

Slide 3

STUDENTS

New undergraduate students

3,996 first-year, first-time students and 2,549 transfers (not including TUJ) 55 percent female and 45 percent male 2,043 new undergraduate students — or about one out of three — report their ethnicity as African-American, Asian, Hispanic or American Indian. They come from 39 states, and 101 nations.

As a result of changes to the length and structure of the SAT, the average score of incoming Temple first-year, first-time students dropped from last year's all-time high of 1098 to 1088.

The national average score dropped 7 points, and the Pennsylvania average dropped 11 points.

Slide 4:

STUDENTS

Continued enrollment growth?

The editors of *The Temple News* recently asked me whether Temple's explosive enrollment growth of the last decade will continue.

The answer is "no."

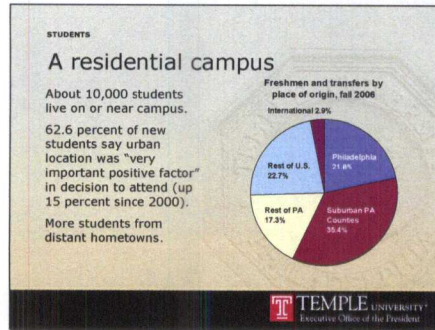
The end of the Baby Boom echo is coming.

Around 2009, the population of high school graduates in the US is expected to plateau, and then decline.

The time has come to take a breath and focus on services to our students.

We must work hard to make sure our students are successful.

Slide 5



Slide 5:

STUDENTS

A residential campus

Does stabilizing enrollment growth mean less students living on or near campus? The answer, again, is "no."

There are about 10,000 students living on or near campus — more than twice as many as there were in 2000.

About 4,500 of those students live in University-owned residence halls.)

More students tell us they want an urban campus experience.

There has been a significant increase in the number of new students who say they considered Temple's urban location a positive factor in their decision to attend. In our fall 2006 surveys of new students, 62.6 percent said that the University's "location in a large city" was a "very important positive factor" influencing their decision to attend Temple, an increase of more than 15 percentage points since the 2000 survey and 22 percentage points since 1997.

Not that long ago, many students chose Temple *in spite* of its location. In 1997, one in five new students said that Temple's urban location was "not a positive factor" in their decision to attend Temple. Now only one in 12 says that Temple's big-city environment was not a positive factor.

In addition, Temple is attracting many more students who come from home towns so far from Philadelphia that commuting is not an option.

Slide 6



Slide 6:

STUDENTS

Off-campus investment

The creation of a vibrant, residential campus community has generated explosive growth through privately funded off-campus student residential development.

The latest example: Avenue North, at 1,250 beds and \$75 million dollars, is the first large non-Temple commercial/residential project in North Philadelphia in a generation.

Avenue North's 78,000-square-foot retail and theater complex should open later this fall.

Slide 7



Slide 8



Slide 7:

STUDENTS

Increased security

In response to an increasing number of students living on or near campus, the Board of Trustees approved funding for four new campus police officers in June 2006.

We are continuing to pursue opportunities to put in stadium lighting in neighborhoods around off-campus student housing, as long as our neighbors agree. Stadium lighting has already been installed on about a half dozen blocks near Main Campus.

Slide 8

ACADEMICS

Faculty recruitment

40 more tenured and tenure-track faculty were hired from the world's leading institutions for fall 2006.

Since fall 2004, Temple has hired about 150 tenured or tenure-track faculty recruits..

We have authorized 122 searches for tenured or tenure-track faculty members to begin in the fall of 2007.

The first of these offers has already been accepted (Nora Engel in the School of Medicine).

By the fall of 2009, when Temple's faculty hiring boom ends, we expect to have hired about 300 new tenured or tenure-track faculty members over a five-year period. The numbers are impressive, but our emphasis will continue to be on quality, not quantity.

Temple has hired some truly outstanding teacher/researchers — leaders in their fields — from renowned immigration law expert Peter Spiro, the Honorable Charles P. Weiner Chair of Law, to leading obesity authority Gary Foster, who joins the School of Medicine and the College of Health Professions.

Four new department chairs have been hired this fall (architecture, community and regional planning, physical therapy, theater).

Many new faculty members have brought their research grants and interdisciplinary research centers.

Slide 9

ACADEMICS

Research

- Research awards, FY 2005: \$80 million (up 28 percent since 2000).
- Research expenditures, FY 2005: \$75 million (up 40 percent since 2000).
- Now more than 90 faculty members have at least \$1 million in external funding (about 20 more than 2005).

Nora Newcomb, psychology

TEMPLE UNIVERSITY
Executive Office of the President

Slide 9:
ACADEMICS
Research

In FY 2005, research awards received by Temple reached \$80 million, a 28 percent increase since 2000.

Temple's research expenditures exceeded \$75 million in FY 2005, a 40 percent increase since 2000.

One exciting recent award:

In September, psychology Professor Nora Newcomb was awarded \$15 million over three years from the National Science Foundation to establish a national Spatial Intelligence and Learning Center.

(a collaboration with the University of Chicago, Northwestern and Penn that will be housed at Temple.)

Now more than 90 Temple faculty members have at least \$1 million in external funding (up more than 20 since 2005).

Slide 10

ACADEMICS

Faculty

- New tenure and promotion guidelines.
- Provost Dick Englert and Faculty Senate President Jane Evans to lead effort to update Faculty Handbook.
- Beginning series of informal discussions with faculty.

TEMPLE UNIVERSITY
Executive Office of the President

Slide 10:
ACADEMICS
Faculty

After receiving a position paper from the Faculty Senate about Temple's tenure and promotion process, I charged a committee of faculty members and administrators to make recommendations for change. I reviewed those recommendations with the Council of Deans, and have just issued new guidelines for tenure and promotion.

In keeping with our new agreement with TAUP, the new tenure and promotion guidelines provide that teaching and research performance are primary, service secondary.

I have asked Interim Provost Dick Englert and Faculty Senate President Jane Evans to lead an effort to update the Faculty Handbook.

Tomorrow I will begin a series of informal discussions with faculty members at my home. I will be inviting members of the Board of Trustees to join those meetings.


Slide 11

ACADEMICS

General education

Implementation of general education program is moving ahead:

- Extension of gen-ed implementation period to fall 2008.
- 51 pilot gen-ed courses approved for spring 2007.



TEMPLE UNIVERSITY
Executive Office of the President

Slide 11:

ACADEMICS

General education

We are moving ahead with the implementation of a new program for general education, replacing Temple's core curriculum.

I have met with the General Education Executive Committee about their concerns.

I agreed with their suggestions, and recommended them to the Academic Affairs Committee in September. These changes will be coming before you today for formal action:

An extension of the gen-ed implementation period until fall 2008 to create a smoother transition and learn from an aggressive piloting program. More than 200 faculty members have helped create 51 exciting pilot gen-ed courses that have been approved for spring 2007. Students may register for them this month; they will receive core credit.

Greater flexibility in the number of courses per gen-ed category.

Slide 12

ACADEMICS

A new dean for CST



New College of Science and Technology
Dean Hai-Lung Dai, eminent chemist,
hired from Penn.

- Starts January 2007.
- He has already hired Vice Dean George Palladino from Penn.
- About two dozen tenured and tenure-track faculty lines open in CST.



TEMPLE UNIVERSITY
Executive Office of the President

Slide 12:

ACADEMICS

A new dean for CST

New College of Science and Technology Dean Hai-Lung Dai, an eminent chemist, has been hired from Penn, where he held an endowed professorship.

Dai, who will be Laura Carnell Professor of Chemistry, has published more than 140 papers and edited several books. He has received more than \$13 million to fund his research.

Dai cares deeply about science education. He is the founder and director of Penn's Science Teacher Institute.

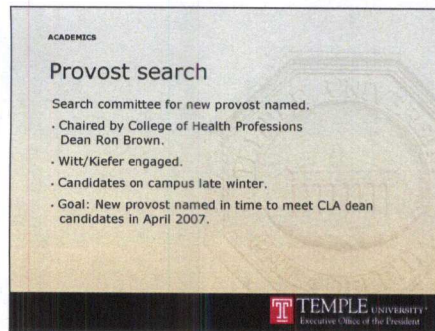
He will start in January 2007.

He has already hired CST Vice Dean George Palladino from Penn.

Dai has an enormous opportunity to shape the college. About two dozen tenured and tenure-track faculty lines are open in CST. We must not lose another hiring season.

Another delay would be devastating.

Slide 13



Slide 13:

ACADEMICS

Provost search

A search committee for a new provost has been named.

The committee will be chaired by College of Health Professions Dean Ron Brown.

(Dean Brown also chaired the search committee that delivered Hai-Lung Dai, so he has a high standard to maintain.)

Witt/Kiefer has been engaged.

Ads will be running soon

Our plan is to have candidates on campus in late winter.

Our Goal: to have a new provost named in time to meet with CLA dean candidates in April 2007.

Slide 14



Slide 14:

DEVELOPMENT

Building private support

In the coming years, one of our top priorities — indeed, our top priority — will be increasing private support, building endowment and creating a culture of philanthropy.

We must mobilize the extended Temple family of alumni and friends for the University's first comprehensive campaign.

There are 240,000 living Temple alumni with 2/3rds living in the Philadelphia region.

We will embark on this campaign with vigor.

Yes, Temple's endowment has lagged compared to similar institutions in the past.

But the past is not manifest destiny.

Temple's alumni and friends are committed. I am confident we will succeed.


Slide 15

DEVELOPMENT

Significant progress

Since 2001...

- Endowment has grown 45 percent.
- Eight new endowed positions.
- 279 new endowed scholarship funds or term scholarships.
- 25 gifts and pledges of more than \$1 million.
- Conwell Society membership up 53 percent.
- Chairman's Circle membership up 43 percent.



TEMPLE UNIVERSITY
Executive Office of the President

Slide 15:
DEVELOPMENT
Significant progress

As evidence of that commitment from Temple's alumni and friends — and as evidence of the strength of our Development and Alumni Affairs staff...

We have made significant progress in recent years.

Since 2001...

Temple's endowment has grown by 45 percent.

Six new endowed faculty and two new endowed basketball coach positions. 152 new endowed scholarship funds and 127 new term scholarships.

25 gifts and pledges of more than \$1 million.

Membership in the Conwell Society (donors of more than \$1,000 a year) has increased by 53 percent.

Membership in the Chairman's Circle (donors of more than \$1 million) has increased by 43 percent.

Slide 16

DEVELOPMENT

A recent case study

Independence Blue Cross pledged \$3.5 million to support cardiology research and a new home for the School of Medicine.



- In discussion for two years.
- Many invitations, interactions, meetings, visits.
- Relationship with IBC board members was critical.



TEMPLE UNIVERSITY
Executive Office of the President

DEVELOPMENT
A recent case study

Here is a recent case study in fundraising — a powerful example of *corporate* commitment:

Independence Blue Cross's \$3.5 million pledge to support cardiology research and a new home for the School of Medicine.

This gift had been in discussion for two years.

It was the product of many invitations, interactions, meetings, communications and campus visits.

Our relationship with IBC board members was critical.

It is a great example of a Temple school or college working closely with our central Development office.


Slide 17

DEVELOPMENT

A recent case study

David Devereaux MBA SBM '86 pledged \$1.5 million to create a new endowed chair in nursing.

- Fulfilled desire to ensure the highest quality nursing education.
- Interest in Temple's progress and opportunity to make a difference.
- His first gift to Temple.



TEMPLE UNIVERSITY
Executive Office of the President

Slide 17:

DEVELOPMENT

A recent case study

I met with a remarkable man last week, David Devereaux, who recently made his first gift to Temple: a \$1.5 million pledge to endow a new chair in nursing. Mr. Devereaux graduated with an MBA from the Fox School of Business in 1986. Like many of our alumni, he had not had strong ties with the university, but in recent years, through increased communications efforts, he became aware and interested in the opportunity to make a difference at Temple.

When Mr. Devereaux called Stuart Sullivan in spring 2006, he reported that he has kept current on Temple news through publications and websites, said that he was impressed with Temple's progress.

After a recent and substantial profit from the sale of his home health care company, he decided to fund an endowed chair in nursing. He recognizes the critical shortage of nurses today, and believes that the best way to increase the quality and quantity of nurses is to ensure the highest quality nursing education. He also was motivated by his mother, a nurse for more than 50 years.

Slide 18:

DEVELOPMENT

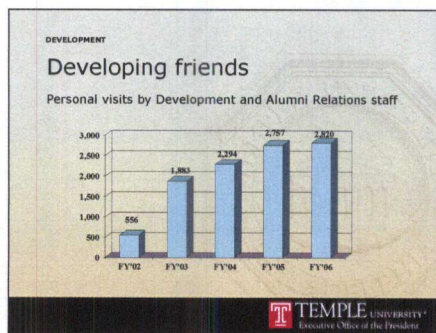
Developing friends

Unleashing commitment from the institutions such as Independence Blue Cross and alumni and friends such as David Devereaux requires a total commitment from the entire Temple community, not just our Development and Alumni Relations staff.

The common currency in these cases is good, old-fashioned face-to-face contact

I know that you have participated in many of these personal visits. Please join me in maintaining this momentum.

Slide 18



Slide 19



Slide 19:

FACILITIES

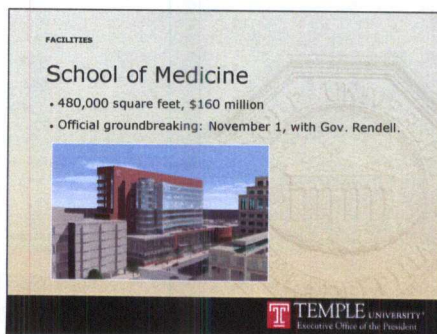
Transforming Temple

Brand new facilities such as the TECH Center and the Ambler Learning Center (the ribbon cutting is tomorrow) are already transforming the Temple experience for students, faculty, staff, alumni and visitors.

When Michael Dell visited campus a few weeks ago (*he is the one in the black suit at center in the photograph*), how cool was it to take him to the TECH Center at 4 o'clock in the afternoon and see 5,176 students already checked in and using the facility?

When it comes to the TECH Center, I share the opinion of Temple undergraduate Dan Abraham, a film and media arts major. When a reporter from *The Chronicle of Higher Education* asked him about the TECH Center, he summed it up as only young people can: "It's awesome with all of this stuff here."

Slide 20



Slide 20:

FACILITIES

School of Medicine

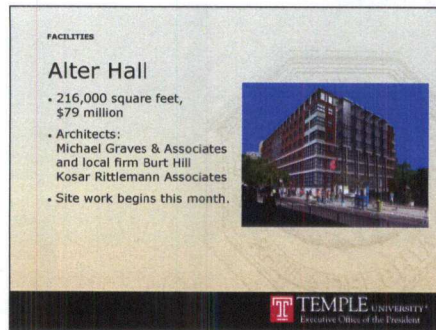
Three flagship capital projects are getting off the ground...

The School of Medicine

480,000 square feet, \$160 million

The official groundbreaking ceremony will be held on November 1, with Gov. Rendell in attendance.

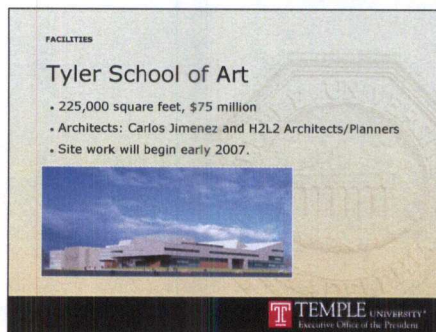
Slide 21



Slide 21:
FACILITIES
Alter Hall

216,000 square feet, \$79 million
Architects are the internationally recognized firm of Michael Graves & Associates
and local firm Burt Hill Kosar Rittlemann Associates
Site work begins this month.

Slide 22



Slide 22:
FACILITIES
Tyler School of Art

225,000 square feet, \$75 million
Architects are Carlos Jimenez, who is celebrated for his design of arts education and exhibition spaces and H2L2 Architects/Planners, a Philadelphia-based firm that specializes in academic buildings.
Site work should begin early next calendar year.
Parking lot 10 is completed and ready. I have decided to put “wet” photographic labs back into the building plans.

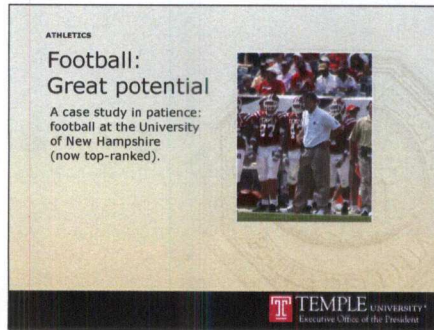
Slide 23



Slide 23:
FACILITIES
The Baptist Temple

Another critical future capital project: The \$29 million renovation of the historic Baptist Temple as an iconic new special events center for Temple — a flagship, University-wide multi-use space for major events from convocations to concerts.
An architect for the renovation of the Baptist Temple has been selected. We are currently in negotiations with the award-winning firm of Hillier Architecture.

Slide 24



Slide 24:

ATHLETICS

Football: Great potential

The football team experienced another difficult loss on Saturday. Although there were signs of progress against Kent State, particularly in the first quarter, I am certain that everyone associated with the program, from our coaching staff to our fans, are frustrated about the first half of the 2006 season.

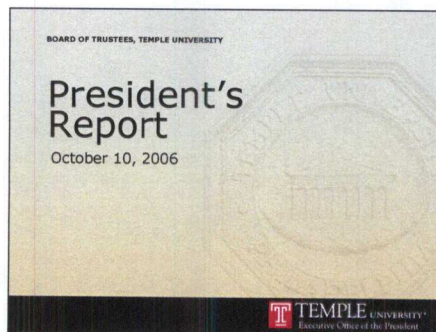
Do not lose hope.

I ask for the Temple community to be patient with Coach Golden and his staff as they create a new culture, tremendous spirit and a total commitment to both academic and athletic success.

I will share an experience from my past — a case study in the benefits of patience. After current University of New Hampshire Coach Sean McDonnell took over in 1999, the team experienced five tough years before they became a consistent winner. Now they're the top-ranked team in Division I-AA, and they have recently upset two Division I-A programs, including a 34-17 win over Northwestern in Evanston, Illinois this year.

I would like to take this opportunity to thank Lew Katz for his service. Lew has agreed to continue to chair the Athletics Committee. I know that Clay Armbrister and Bill Bradshaw are looking forward to working with him in the coming year to advance Temple Athletics — a top priority of the University.

Slide 25



**REPORTS AND RECOMMENDATIONS FOR ACTION
STANDING COMMITTEES**

Committee on Trustee Affairs – Lewis F. Gould, Jr.

1. Report

The report of the Committee on Trustee Affairs was accepted as presented in Agenda Reference 1.

RECOMMENDATIONS FOR ACTION:

2. Re-Election of University Trustees

Upon motion duly made and seconded, the Board of Trustees approved the recommendation of the Committee on Trustee Affairs (9/6/06) and re-elected the following individuals for the term beginning October 10, 2006, to the Board of Trustees of Temple University – Of The Commonwealth System of Higher Education.

<u>For Re-Election 2006-2010</u>	<u>Initial Year of Appointment</u>
William H. Cosby, Jr.	1982
Nelson A. Diaz	1996
Lewis Katz	1998
Theodore A. McKee	2002
Mitchell L. Morgan	2002
James S. White	1999

(Secretary's Note: Trustees Diaz, Katz, McKee, Morgan and White abstained and did not participate in this action.)

3. Election of Officers for 2006-2007

Upon motion duly made and seconded, the officers listed below, having been duly nominated by the Committee on Trustee Affairs (9/6/06), were elected to serve until the next Annual Meeting of the Board or until their successors shall have been elected and qualified:

President -----	Ann Weaver Hart
Interim Provost -----	Richard M. Englert
Senior Vice President -----	Clarence D. Armbrister
Vice President, Chief Financial Officer, and Treasurer --	Martin S. Dorph
Vice President for Computer and Information Services --	Timothy C. O'Rourke
Vice President for Student Affairs -----	Theresa A. Powell
Vice President for Research and Graduate Studies -----	Kenneth J. Soprano
Vice President for Development and Alumni Affairs ----	Stuart P. Sullivan

Vice President ----- William T. Bergman
 Vice President ----- Robert J. Reinstein
 *University Counsel and Secretary ----- George E. Moore

* The Secretary will also serve as Secretary of the Boards of Visitors.

(Secretary's Note: President Hart abstained and did not participate in this action.)

4. Election of Board of Directors of Temple University Health System, Inc.

a.) For Re-Election

Upon motion duly made and seconded, the Board of Trustees, upon the recommendation of the Board of Directors of Temple University Health System, Inc. ("TUHS") and the Committee on Trustee Affairs (9/6/06), re-elected the following individuals to the Board of Directors of TUHS each for the term set forth below or until a successor has been duly elected:

<u>For Re-Election</u> <u>2006-2009</u>	<u>Initial Year</u> <u>of Appointment</u>
Martin S. Dorph	1999
John Haas	1996
Robert H. LeFever	1996
Jane Scaccetti	1996

b.) For Election

Upon motion duly made and seconded, the Board of Trustees, upon the recommendation of the Board of Directors of Temple University Health System, Inc. ("TUHS") and the Committee on Trustee Affairs (9/6/06), elected the following individuals to the Board of Directors of TUHS each for the term set forth below or until a successor has been duly elected:

For Election
2006-2007
 Howard Gittis
 Lewis F. Gould, Jr.
 Lon Greenberg

(Secretary's Note: Trustees Gittis and Gould abstained and did not participate in this action.)

5. Resolution of Appreciation

Upon motion duly made and seconded, the Board of Trustees, upon the recommendation of the Committee on Trustee Affairs (9/6/06), approved the Resolution of Appreciation for Oscar A. Chow as set forth in Agenda Reference 5.

Executive Committee – Lewis F. Gould, Jr., Vice Chair

6. Report

The report of the Executive Committee was accepted as presented in Agenda Reference 6.

RECOMMENDATIONS FOR ACTION:

7. Board and Standing Committees' Schedule of Meetings for 2006-2007

Upon motion duly made and seconded, the Board of Trustees approved the Schedule of Meetings for the Board and Standing Committees for 2006-2007, as set forth in Agenda Reference 7, with meetings of the Board being held at 3:30 p.m. in Feinstone Lounge, Sullivan Hall, Liacouras Walk and Berks Mall.

8. Borrowing Authority – November 1, 2006 through December 31, 2006

Upon motion duly made and seconded, the Board of Trustees authorized the officers to borrow, for operating purposes of the University, \$30 million on terms which the officers believe best for the University, such authority to cover the period from November 1, 2006, through December 31, 2006.

Board of Directors, Temple University Health System, Inc. –
Joseph W. Marshall, III, Chair & Chief Executive Officer

9. Report

The report of the Temple University Health System was accepted as presented in Agenda Reference 9.

Facilities Committee – Mitchell L. Morgan, Chair

10. Report

The report of the Facilities Committee was accepted as presented in Agenda Reference 10.

RECOMMENDATIONS FOR ACTION:

11. Laboratory Renovation – Medical Research Building, Fourth Floor

Upon motion duly made and seconded, the Board of Trustees approved the recommendation of the Facilities Committee (9/14/06) that the officers be authorized to proceed with the laboratory renovation to the fourth floor, Medical Research Building, at a cost not-to-exceed \$1,500,000, with the funding and financing source being the University Central Carryover Fund.

12. Beury Hall, Phase IV of V – Renovation Construction

Upon motion duly made and seconded, the Board of Trustees approved the recommendation of the Facilities Committee (10/5/06) that the officers be authorized to proceed with the renovation construction of Beury Hall, Phase IV (of V), at a cost not-to-exceed \$3.7 million, with the funding and financing source being the Plant Development Fund.

13. Biology & Life Sciences Building – Cooling Towers

Upon motion duly made and seconded, the Board of Trustees approved the recommendation of the Facilities Committee (10/5/06) that the officers be authorized to proceed with the replacement of the cooling towers on the Biology & Life Sciences Building, at a cost not-to-exceed \$750,000, with the funding and financing source being the Plant Development Fund.

14. Various Elevator Upgrades

Upon motion duly made and seconded, the Board of Trustees approved the recommendation of the Facilities Committee (10/5/06) that the officers be authorized to proceed with the upgrade of various elevators, at a cost not-to-exceed \$750,000, with the funding and financing source being the Plant Development Fund.

Academic Affairs Committee – Leonard Barrack, Chair

15. Report

The report of the Academic Affairs Committee was accepted as presented in Agenda Reference 15.

RECOMMENDATIONS FOR ACTION:

16. Consideration of Tenure

Upon motion duly made and seconded, the Board of Trustees approved the recommendations of the Academic Affairs Committee (9/25/06 and 10/10/06) and the President regarding the granting of faculty tenure.

17. Modifications to General Education Policy (policy 02.10.02)

Upon motion duly made and seconded, the Board of Trustees approved the recommendation of the Academic Affairs Committee (9/25/06) that the officers be authorized to modify the General Education Program Requirements in Board Policy #02.10.02, as set forth in Agenda Reference 17.

18. Reorganize the Department Structure of the Esther Boyer College of Music and Dance by Eliminating the Departments of Composition and Jazz Studies, Music History, and Music Theory and Establishing the Department of Music Studies

Upon motion duly made and seconded, the Board of Trustees approved the recommendation of the Academic Affairs Committee (9/25/06) that the officers be authorized to reorganize the department structure of the Esther Boyer College of Music and Dance by eliminating the Departments of Composition and Jazz Studies, Music History, and Music Theory and establishing the Department of Music Studies.

19. Transfer the Tenure of the Faculty Members of the Departments of Composition and Jazz Studies, Music History, and Music Theory to the Newly-Established Department of Music Studies

Upon motion duly made and seconded, the Board of Trustees approved the recommendation of the Academic Affairs Committee (9/25/06) that the officers be authorized to move the tenure of the faculty of the Department of Composition and Jazz Studies, the faculty of the Department of Music History, and the faculty of the Department of Music Theory into the Department of Music Studies.

Development Committee – Richard J. Fox, Chair

20. Report

The report of the Development Committee was accepted as presented in Agenda Reference 20.

RECOMMENDATION FOR ACTION:

21. Naming – Jack Niven Classroom Memorial Fund

Upon motion duly made and seconded, the Board of Trustees, upon the recommendations of the Development Committee (10/10/06) and the Gift Acceptance Committee (9/18/06), named the Honors Classroom located in the 1300 Residence Hall in memory of Jack Niven, former Director of University Housing, in recognition of his dedicated service to Temple University and gifts made in his memory by colleagues and friends.

Budget & Finance Committee – Lewis F. Gould, Jr., Chair

22. Report

The report of the Budget & Finance Committee was accepted as presented in Agenda Reference 22.

Athletics Committee – Lewis Katz, Chair

23. Report

The report of the Athletics Committee was accepted as presented in Agenda Reference 23.

The Audit Committee and the Student Affairs Committee did not meet during the reporting period.

APPOINTMENT OF STANDING COMMITTEES FOR 2006-2007

24. Nominations for Membership on the Executive Committee by the Chair of the Board

Chairman Polett commented that he would be happy to consider any requests for changes in committee assignments.

Upon motion duly made and seconded, the Board of Trustees approved, as required by Section 6.3.A. of the Bylaws, the appointments to the Executive Committee made this day by the Chair of the Board and effective this date.

25. Chair of the Board Announces Committee Assignments

Informational item; no action required.

OFFICER'S REPORT

26. Treasurer's Report – Martin S. Dorph

The Treasurer's Report for the Three Months Ended June 30, 2006, and grants and contracts awarded between April 1, 2006, and June 30, 2006, was accepted as presented in Agenda Reference 26.

OLD BUSINESS

NEW BUSINESS

27. Naming of University Building

Chairman Polett announced the naming of the Student Center I in honor of Howard Gittis, stating that Mr. Gittis has been one of Temple's most outstanding leaders in the University's long history. During Mr. Gittis' time of service, the campus has grown, our programs, our students, and our service to the community, to the city and to the state have advanced by leaps and bounds.

Upon motion duly made and seconded, the Board of Trustees approved the recommendations of the Executive Committee (10/10/06), Development Committee (7/19/06) and the Gift Acceptance Committee (9/18/06), and named the Student Center I in honor of Howard Gittis, in recognition of his generous support to the University and his outstanding leadership as Chairman of the Board of Trustees of Temple University – Of The Commonwealth System of Higher Education from June 14, 2000 through June 30, 2006.

Mr. Gittis thanked the Board of Trustees and the Temple University community. He stated that "...of all the things I have endeavored to do in my life, my service to this university, next to family, is the most significant to me..."

The Board gave Mr. Gittis a standing ovation.

ADJOURNMENT